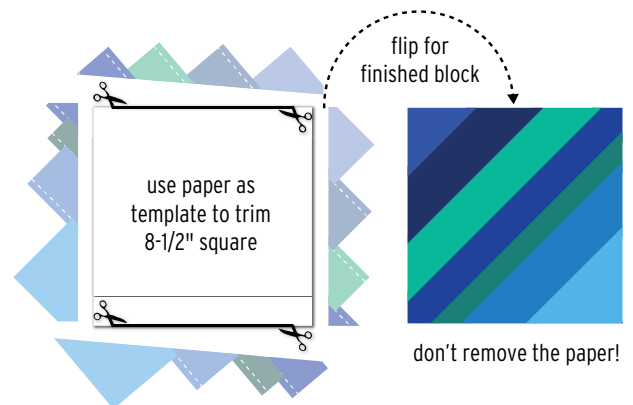
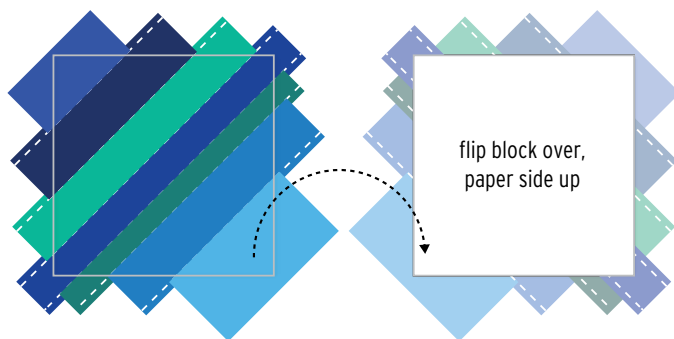
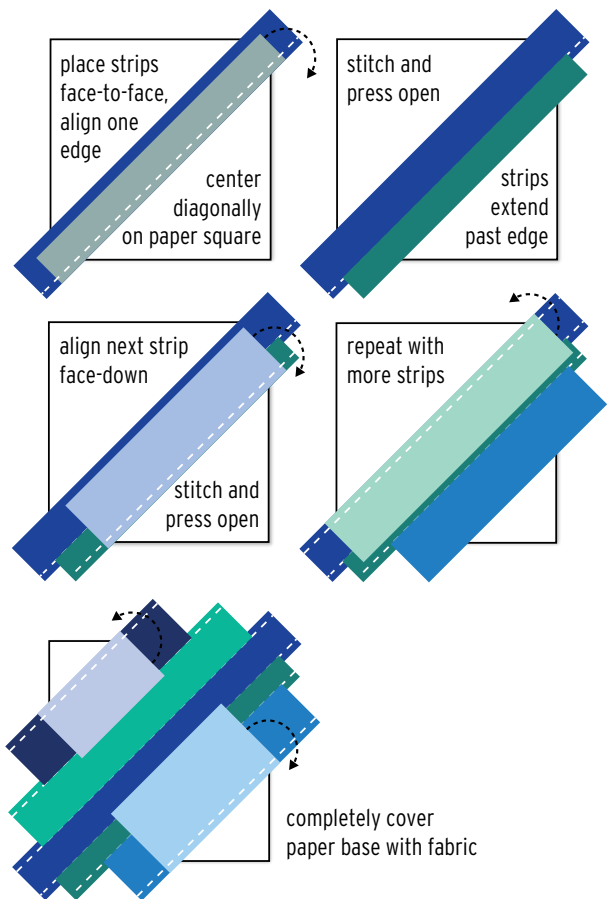




LAKE EFFECT: This summertime Madison Modern Quilt Guild block lotto challenge inspires us to relax and refresh by the lake. Dip into your fabric stash and scraps of cool colors for string-piecing on paper foundations. Vary colors and strip widths to create an improv look for the 8-1/2" blocks. Arrange to create a **LAKE EFFECT** - concentric ripples, aligned into streams, or waves on point.

Submit finished blocks [HERE](#) by 6pm Central Time Thursday 9/10/2020 to enter MMQG block lotto drawing.

- Gather fabric strips & scraps
 - blue & green cool lake colors
 - solids or tonal prints
 - overall color should read as water
- Cut or piece strips
 - vary strip widths 1"-3" wide, max 14" long
- Cut foundation paper into an 8-1/2" square
 - use copier paper, newsprint, magazine pages
- Arrange strips on the diagonal
 - position first strip face-up, corner-to-corner
 - leave overhang about 1/2" on each side
 - place next strip face-down, align strip edges
- Sew 1/4" seam along stacked strip edge
 - stitch through 2 layers of fabric onto paper
- Flip top strip open and press out from center
- Align next strips face down and sew
 - vary strip widths and slight angles
 - use shorter strips closer to the corners
- Continue adding strips until paper is covered
 - Be sure all strips extend beyond the paper
- Use paper base edges as template for trimming
 - trim to 8-1/2" square; block will finish at 8"



Video instructions on foundation string piecing:

[Short & Fast: String Piecing Made Easy](#) (less than a minute!)

[Sew Easy, String Piecing](#) - example on fabric foundation (5:36 minutes)